

EXPLANATORY PLAN OF EASEMENT OF PARTS OF STRATA LOTS 5 AND 6, BLOCK 'K', DISTRICT LOT 230 STRATA PLAN BCP

PLAN BCP

PURSUANT TO SECTION 99 (1) (e) OF THE LAND TITLE ACT

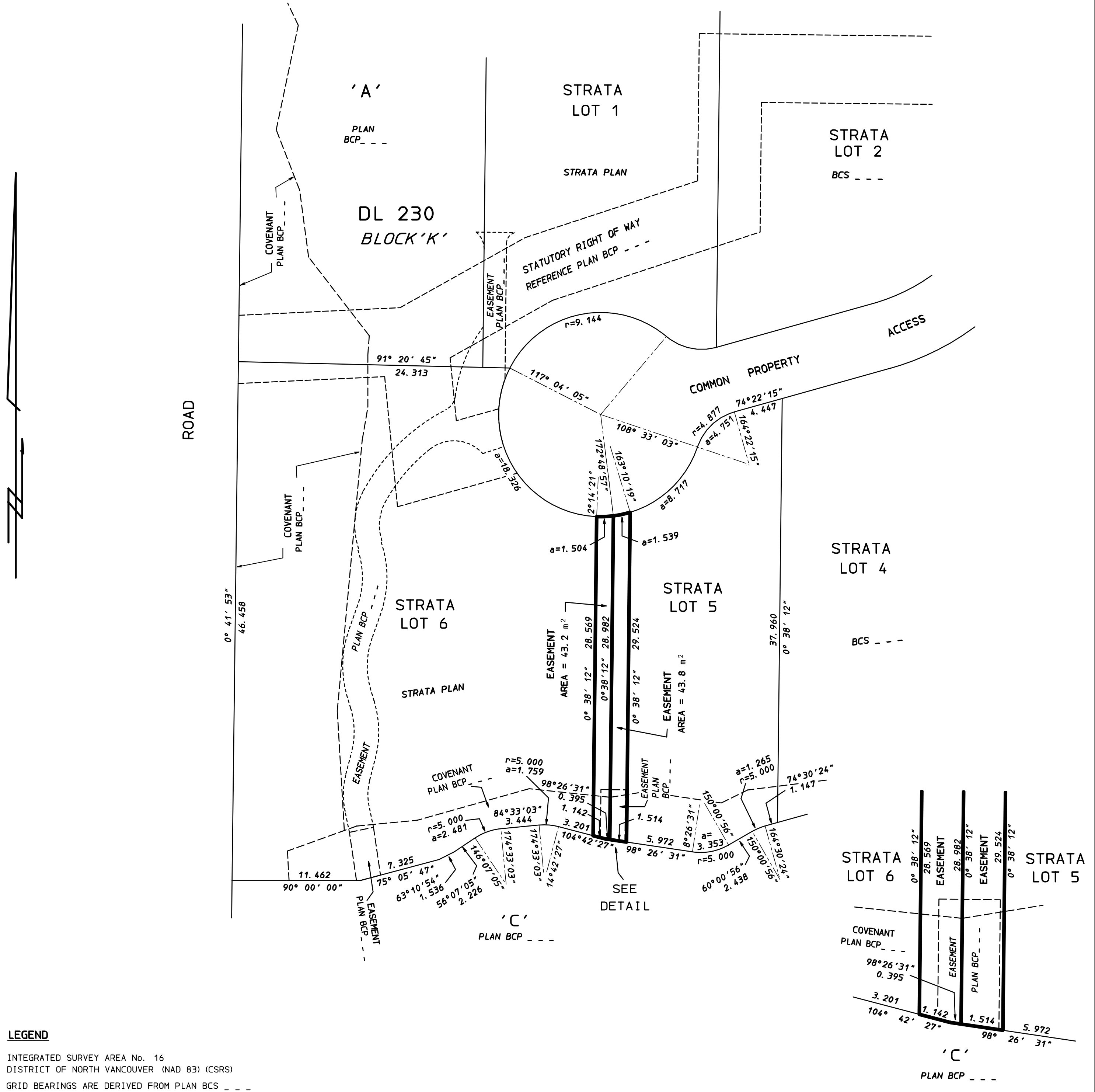
DEPOSITED IN THE LAND TITLE OFFICE AT NEW WESTMINSTER, B. C., THIS _____ DAY OF _____, 20____

BCGS 92G036



THE INTENDED PLOT SIZE OF THIS PLAN IS 432 mm IN WIDTH BY 560 mm IN HEIGHT (C SIZE) WHEN PLOTTED AT A SCALE OF 1:250 ALL DISTANCES ARE IN METRES OR DECIMALS THEREOF UNLESS OTHERWISE NOTED

REGISTRAR



LEGEND

INTEGRATED SURVEY AREA No. 16
DISTRICT OF NORTH VANCOUVER (NAD 83) (CSRS)
GRID BEARINGS ARE DERIVED FROM PLAN BCS

THE PLAN WAS COMPLETED AND CHECKED, AND THE CHECKLIST FILED UNDER # _____, ON THE ____ TH DAY OF _____, 2009 AND IS HEREBY CERTIFIED CORRECT IN ACCORDANCE WITH LAND TITLE OFFICE RECORDS

THIS PLAN LIES WITHIN THE GREATER VANCOUVER REGIONAL DISTRICT